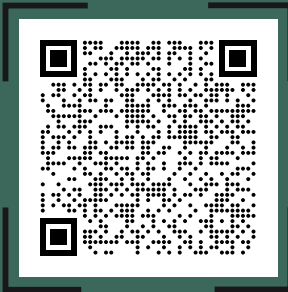




SCAN FOR BROCHURE



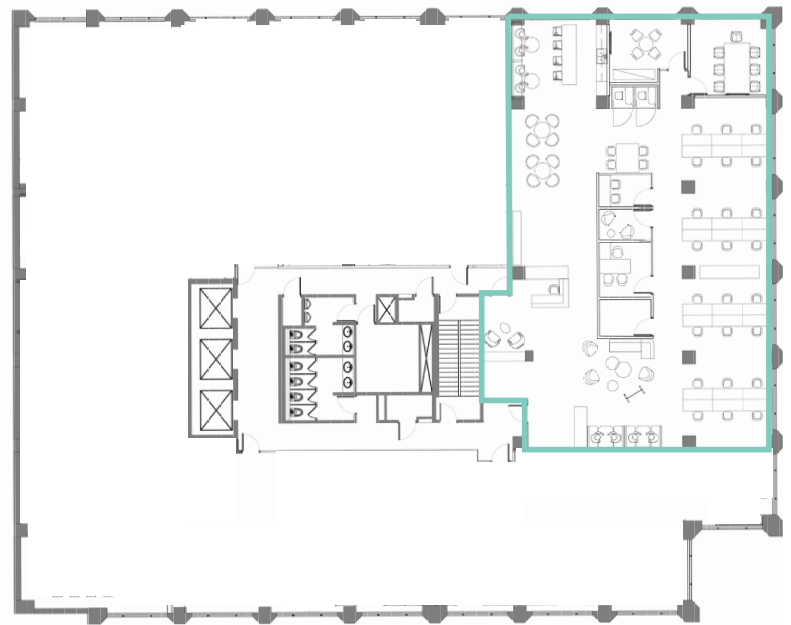
To be delivered in turnkey condition to the tenant's design specifications with high quality modern improvements.

Area Unit 403: 4,270 SF

Availability Immediately

Basic Rent \$28.00 PSFPA

Additional Rent Contact Agents



**Willow King**

Personal Real Estate Corporation  
**ASSOCIATE VICE PRESIDENT**  
 +1 604 210 2150  
 willow@floorspace.ca

**Robin Macdonald**

**SENIOR ASSOCIATE**  
 +1 604 617 1445  
 robin@floorspace.ca