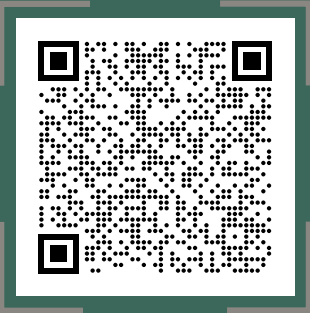
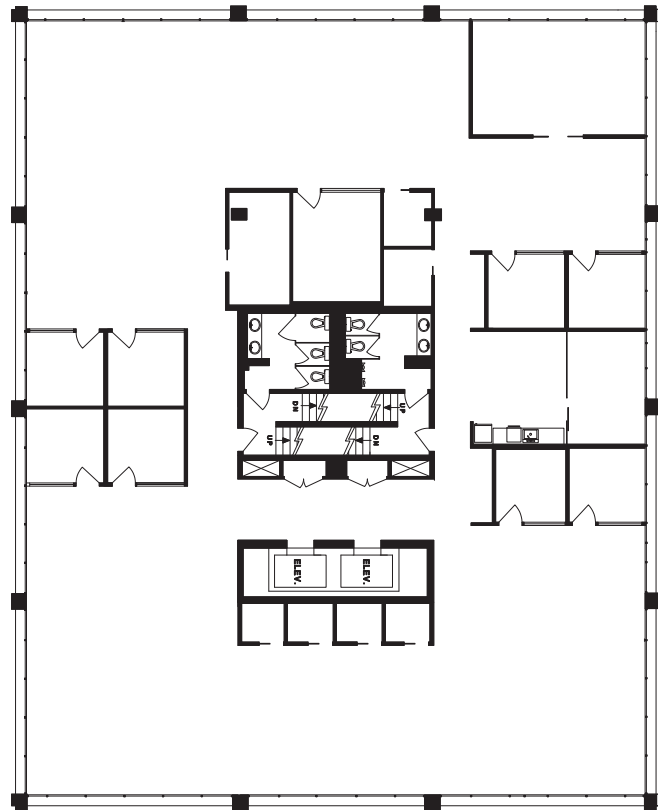




SCAN FOR BROCHURE



Unit	200
Area	~7,754 SF
Availability	Immediately
Basic Rent	Contact Agents
Additional Rent	\$28.62 PSFPA (2026 est.)



FOR MORE INFORMATION, PLEASE CONTACT:



Jocelyne Legal
Personal Real Estate Corporation
EXECUTIVE VICE PRESIDENT
 +1 604 931 5021
 jlegal@floorspace.ca

THIS DOCUMENT HAS BEEN PREPARED BY FLOORS SPACE COMMERCIAL INC. FOR ADVERTISING AND GENERAL INFORMATION ONLY. ALL INFORMATION CONTAINED HEREIN IS FROM SOURCES WE DEEM RELIABLE, AND WE HAVE NO REASON TO DOUBT ITS ACCURACY; HOWEVER, NO GUARANTEE OR RESPONSIBILITY IS ASSUMED THEREOF, AND IT SHALL NOT FORM ANY PART OF FUTURE CONTRACTS. PROPERTY INFORMATION IS SUBMITTED SUBJECT TO ERRORS AND OMISSIONS AND ALL INFORMATION SHOULD BE CAREFULLY VERIFIED. ANY INTERESTED PARTY SHOULD UNDERTAKE THEIR OWN INQUIRIES AS TO THE ACCURACY OF THE INFORMATION. ALL MEASUREMENTS QUOTED HEREIN ARE APPROXIMATE. THIS PUBLICATION IS THE COPYRIGHTED PROPERTY OF FLOORS SPACE COMMERCIAL INC. AND/OR ITS LICENSOR(S). COPYRIGHT © 2026 FLOORS SPACE COMMERCIAL INC.