



FOR LEASE

# 1085 Homer Street

// OPEN PLAN YALETOWN OFFICE SPACE

## THE OPPORTUNITY

Bright and southwest-facing, this suite offers high ceilings and generous natural light. It includes one boardroom, three meeting rooms, a spacious kitchen, and open workspace. Positioned in the heart of Yaletown, it is steps from top-tier amenities, dining, and convenient transit access.

Unit:	325
Area:	3,785 SF
Availability:	Immediately
Basic Rent:	Contact listing agent
Additional Rent:	\$24.89 PSFPA (2025 est.)



Meeting  
Rooms



Natural  
Light



Prime  
Location



Bike  
Friendly



Close To  
Skytrain



Open  
Floorplan



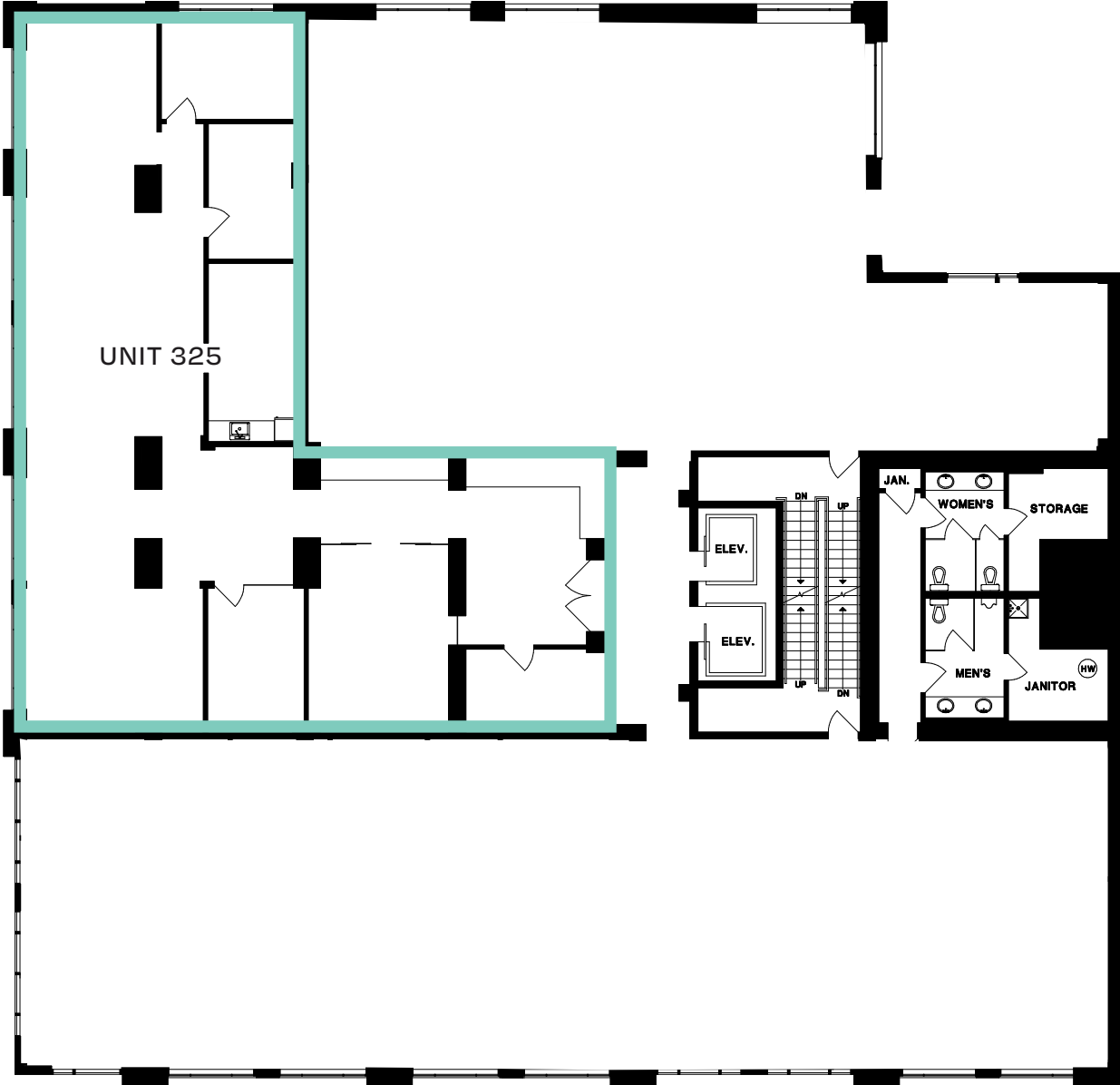
# FLOOR PLANS

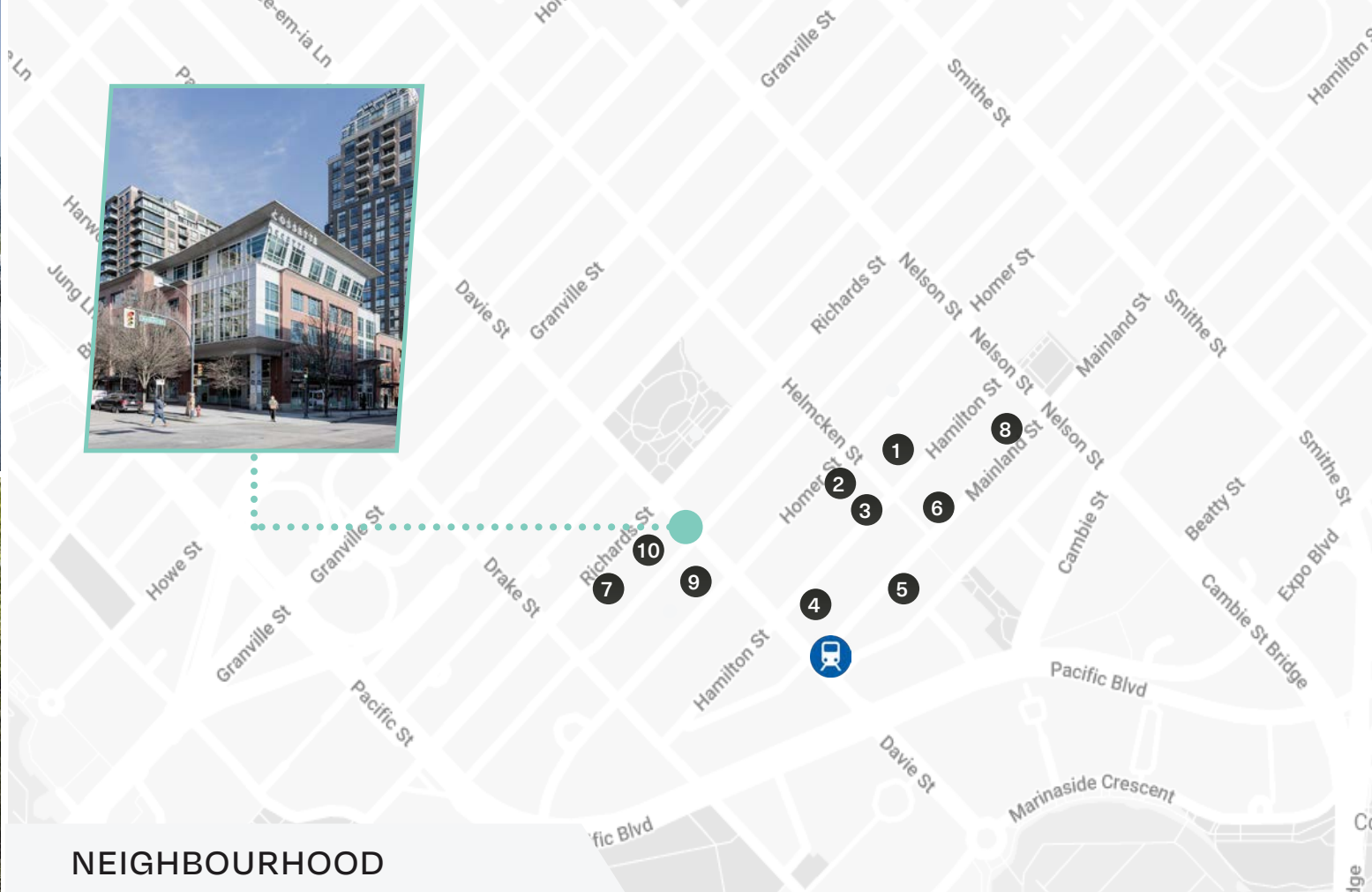
## UNIT 325

3,785 SF (APPROX.)



[VIRTUAL TOUR](#)





## NEIGHBOURHOOD

Located in vibrant Yaletown, 1085 Homer offers easy access to top dining, shopping, and entertainment. With excellent transit links, including the Yaletown–Roundhouse Canada Line Station, commuting is easy. Just steps from the Seawall and green spaces like David Lam Park, providing the perfect urban atmosphere.

- |    |                 |     |                         |
|----|-----------------|-----|-------------------------|
| 1. | Blue Water Cafe | 6.  | Earls Kitchen + Bar     |
| 2. | Scotiabank      | 7.  | Jaybird Studio          |
| 3. | Elisa Steak     | 8.  | The Greek Yaletown      |
| 4. | Starbucks       | 9.  | JJ Bean Coffee Roasters |
| 5. | Minami          | 10. | Choices Market          |



TRANSIT SCORE

100



WALK SCORE

100



BIKE SCORE

84



For more information, please contact:



**Harris Sheldon**

ASSOCIATE

+1 604 612 6516

[harris@floorspace.ca](mailto:harris@floorspace.ca)

---

## FLOORSPACE

900 West Hastings St., Suite 520

Vancouver, BC Canada

V6C 1E5

[www.floorspace.ca](http://www.floorspace.ca)

THIS DOCUMENT HAS BEEN PREPARED BY FLOORSPACE COMMERCIAL INC. FOR ADVERTISING AND GENERAL INFORMATION ONLY. ALL INFORMATION CONTAINED HEREIN IS FROM SOURCES WE DEEM RELIABLE, AND WE HAVE NO REASON TO DOUBT ITS ACCURACY; HOWEVER, NO GUARANTEE OR RESPONSIBILITY IS ASSUMED THEREOF, AND IT SHALL NOT FORM ANY PART OF FUTURE CONTRACTS. PROPERTY INFORMATION IS SUBMITTED SUBJECT TO ERRORS AND OMISSIONS AND ALL INFORMATION SHOULD BE CAREFULLY VERIFIED. ANY INTERESTED PARTY SHOULD UNDERTAKE THEIR OWN INQUIRIES AS TO THE ACCURACY OF THE INFORMATION. ALL MEASUREMENTS QUOTED HEREIN ARE APPROXIMATE. THIS PUBLICATION IS THE COPYRIGHTED PROPERTY OF FLOORSPACE COMMERCIAL INC. AND/OR ITS LICENSOR(S). COPYRIGHT © 2025 FLOORSPACE COMMERCIAL INC.

