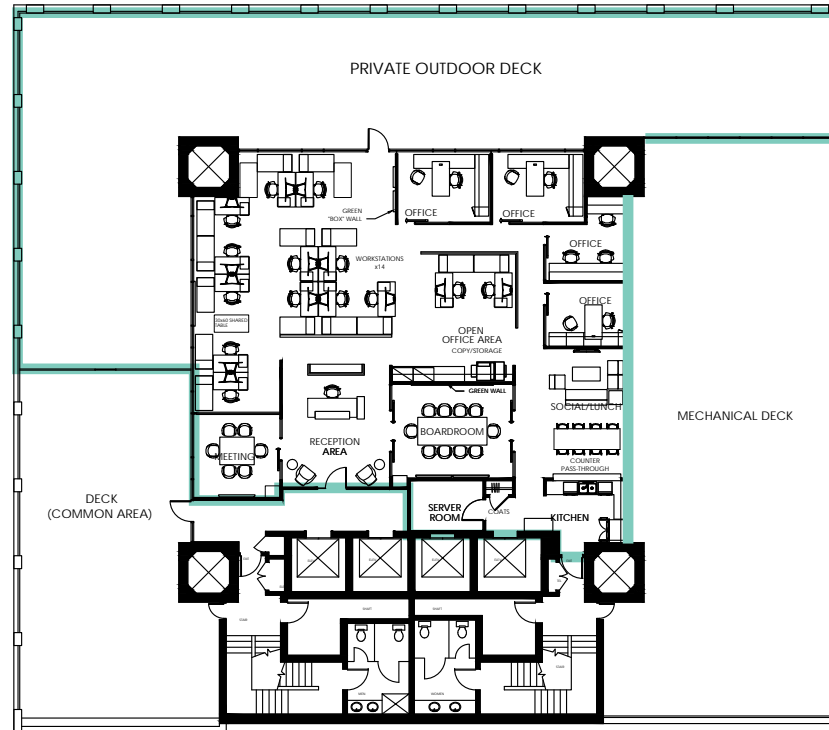


// Unit 200



Single tenant floor featuring 12' open ceilings, radiant floor heating, column-free layout with high-quality improvements including a mix of open area, enclosed offices, kitchen and lounge area. This space boasts a large private patio of approximately 3,000 sf.

*48 hours notice required for tours.*

<b>Size</b>	~3,940 SF
<b>Basic Rent</b>	Contact Agents
<b>Additional Rent</b>	\$21.52 PSFPA (2026 est.)
<b>Availability</b>	Sep 01, 2026